

Wide input range 1:2
 case style: 2" x 2"

MEDICAL - INDUSTRIAL DC/DC Converters

10 Watt
 Series: MED-DIW2

**EN 60079-11
 EN/UL/CSA 60601-1 & 2**

REINFORCED INSULATION

Electrical specifications:

Input voltage: wide 1:2
 Output voltage accuracy: +/- 3%
 Line regulation: +/- 0,2%
 Load regulation: +/- 1%
 Operating temperature: -40°C up to +95°C
 Ambient temperature: -40°C to +60°C

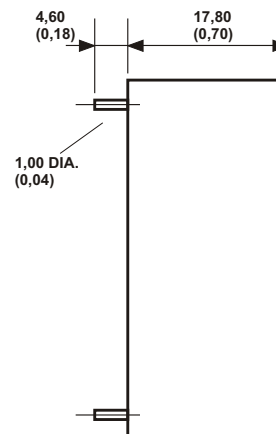
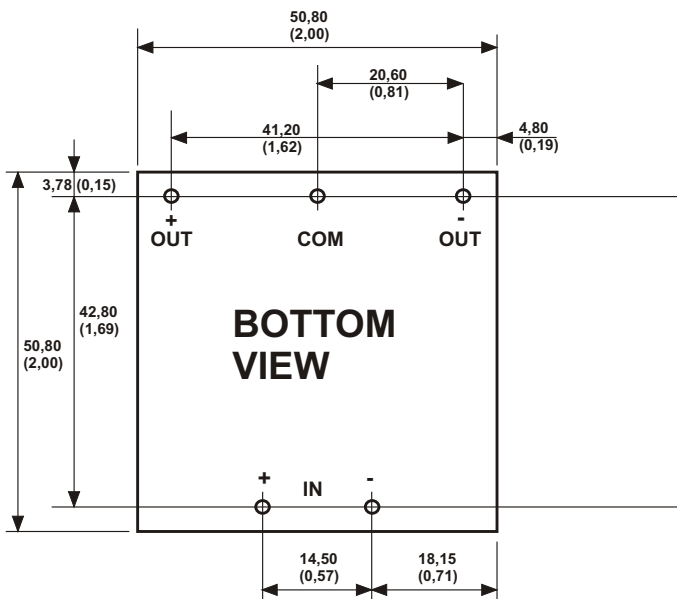
Efficiency: up to 82%
 Insulation test voltage: 4000VAC rms
 Output ripple & noise: typ. 150mVp-p continuous
 Short circuit protection:
 Double Section Transformer

CAUTION: NO INPUT POLARITY CHANGE ALLOWED!

Part - No. Single	Input Voltage DC	Output Voltage	Output Current	Part - No. Dual	Input Voltage DC	Output Voltage DC	Output Current
MED-DIW2-1205	12V	5V	2000mA	MED-DIW2-1205D	12V	+/- 5V	+/-1000mA
MED-DIW2-1212	(9-18V)	12V	833mA	MED-DIW2-1212D	(9-18V)	+/-12V	+/- 416mA
MED-DIW2-1215		15V	666mA	MED-DIW2-1215D		+/-15V	+/- 333mA
MED-DIW2-2405	24V	5V	2000mA	MED-DIW2-2405D	24V	+/- 5V	+/-1000mA
MED-DIW2-2412	(16-36V)	12V	833mA	MED-DIW2-2412D	(16-36V)	+/-12V	+/- 416mA
MED-DIW2-2415		15V	666mA	MED-DIW2-2415D		+/-15V	+/- 333mA
MED-DIW2-4805	48V	5V	2000mA	MED-DIW2-4805D	48V	+/- 5V	+/-1000mA
MED-DIW2-4812	(36-72V)	12V	833mA	MED-DIW2-4812D	(36-72V)	+/-12V	+/- 416mA
MED-DIW2-4815		15V	666mA	MED-DIW2-4815D		+/-15V	+/- 333mA

Any other in & output voltages on request !

ALL DIMENSIONS IN MM (INCHES)
 MILLIMETERS +/- 0,5mm
 (INCHES +/- 0,02")
 All pins on a 5,08mm pitch.



Specification may be changed without notice
 please contact office for verification

We can offer EMC - Filter
 according to EN55011/22 Class B.