

Regulated
 Case Style: SIP 7

INDUSTRIAL DC/DC Converters

1 Watt / 2 Watt
 Series: FS7R

Electrical specifications:

Input voltage range: - 5% / +10%
 Output voltage accuracy: +/- 5%
 Line regulation of Vin: +/- 0,5%
 Load regulation: +/- 1%
 (10% to 100% full load)
 Efficiency: up to 75%
 Insulation test voltage: 2000V DC
 Output Ripple & Noise: typ. 50mVp-p

Short circuit protection: Continuous
 Operating temperature: -40°C to +95°C
 Ambient temperature: -40°C to +71°C
 2 Watt Version: -40°C to +60°C
 derating above Ta +60°C: 2% / °C
 Switching frequency: 50kHz
 Optional: Part-Nr. /H: 3kV DC **
 Part-Nr. /5: 0,5W output power
 Part-Nr. /7: 0,75W output power
 Part-Nr. /9 ***: -55°C to +85°C
 Ambient temperature
 *** max. 0,5W output power

CAUTION: NO INPUT POLARITY CHANGE ALLOWED!

Single Output			1 Watt	2 Watt
Part - No.	Input Voltage	Output Voltage	Output current	Output current
FS7R-0503,3	5V	3,3	303mA	
FS7R-0505		5	200mA	400mA
FS7R-0512		12	83mA	166mA
FS7R-0515		15	67mA	133mA
FS7R-1203,3	12V	3,3	303mA	
FS7R-1205		5	200mA	400mA
FS7R-1212		12	83mA	166mA
FS7R-1215		15	67mA	133mA
FS7R-1503,3	15V	3,3	303mA	
FS7R-1505		5	200mA	400mA
FS7R-1512		12	83mA	166mA
FS7R-1515		15	67mA	133mA
FS7R-2403,3	24V	3,3	303mA	
FS7R-2405		5	200mA	400mA
FS7R-2412		12	83mA	166mA
FS7R-2415		15	67mA	133mA

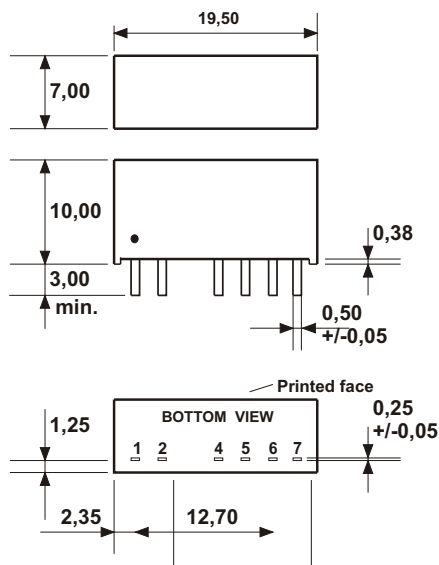
PIN CONNECTION		
PIN	SINGLE	SINGLE B*
1	VCC	VCC
2	GND	GND
3	NP	NP
4	-Vout	NP
5	NP	-Vout
6	+Vout	NP
7	NP	+Vout

* For other pinning add "B" to the end of partnumber: FS7R-0505B 1W

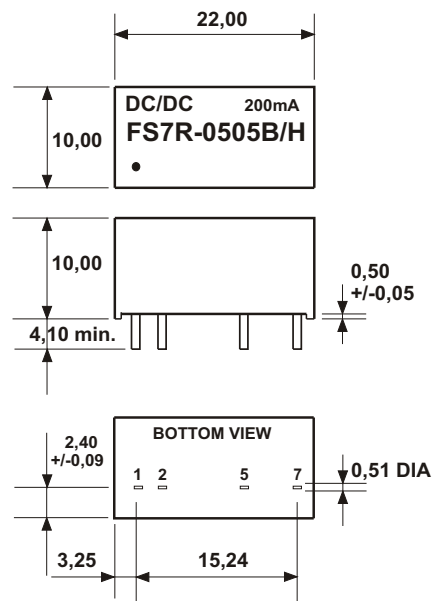
ALL DIMENSIONS IN MM
 MILLIMETERS +/- 0,25mm
 All pins on a 2,54mm pitch
 NC = No connection; NP = No pin
 Note: Dot denotes pin 1

Input capacitor 4,7µF - 10µF is a must.

Any other output voltages available



** Part-Nr.: /H & 2 Watt Version



Specification may be changed without notice
 please contact office for verification

We can offer EMC - Filter
 according to EN55011/22 Class B.

Regulated
Case Style: SIP 7

INDUSTRIAL DC/DC Converters SHORT CIRCUIT PROOF

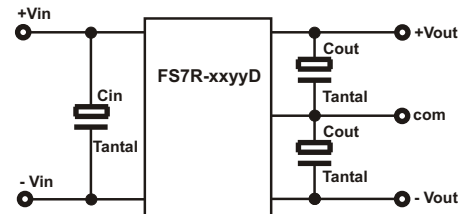
1 Watt
Series: FS7R

Electrical specifications:

Input voltage range:	+/- 10%	Short circuit protection:	continuous
U _{in} = 5V :	- 5% / +10%	Switching frequency:	40kHz
Output voltage accuracy:	+/- 5%	Insulation test voltage:	1000V DC
Line regulation of Vin:	+/- 0,5%	Output Ripple & Noise:	typ. 50mVp-p up to 75%
Load regulation:	+/- 1%	Efficiency:	
(10% to 100% full load)			
Operating temperature:	-40°C to +95°C		
Ambient temperature:	-40°C to +71°C		

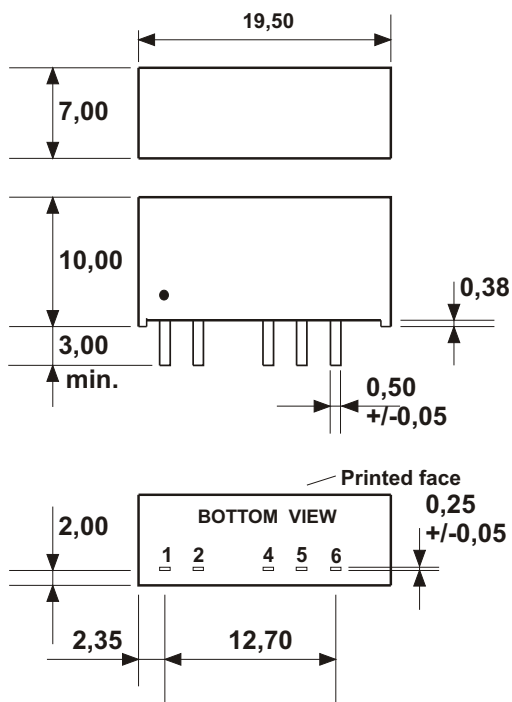
CAUTION NO INPUT POLARITY CHANGE ALLOWED!

Part - No.	Input Voltage	Output Voltage	Output current
FS7R-0505D FS7R-0512D FS7R-0515D	5V	+/- 5V +/- 12V +/- 15V	+/-100mA +/- 42mA +/- 33mA
FS7R-1205D FS7R-1212D FS7R-1215D	12V	+/- 5V +/- 12V +/- 15V	+/-100mA +/- 42mA +/- 33mA
FS7R-2405D FS7R-2412D FS7R-2415D	24V	+/- 5V +/- 12V +/- 15V	+/-100mA +/- 42mA +/- 33mA



Input Voltage	Capacitance is a must	
	Cin	Cout
5V	4,7 - 10µF	4,7µF/35V
24V	4,7µF/50V	10µF/35V

Any other output voltages available



PIN CONNECTION	
PIN	DUAL
1	VCC
2	GND
3	NP
4	-Vout
5	COM
6	+Vout
7	NP

ALL DIMENSIONS IN MM
MILLIMETERS +/- 0,25mm
All pins on a 2,54mm pitch
NC = No connection; NP = No pin
Note: Dot denotes pin 1

Specification may be changed without notice
please contact office for verification

We can offer EMC - Filter
according to EN55011/22 Class B.