

Stand: 14/11

Regulated  
Case Style: SIP 8

# COMMERCIAL-INDUSTRIAL DC/DC Converters

1 Watt / 2 Watt  
Series: SL8W2

**Electrical specifications:**

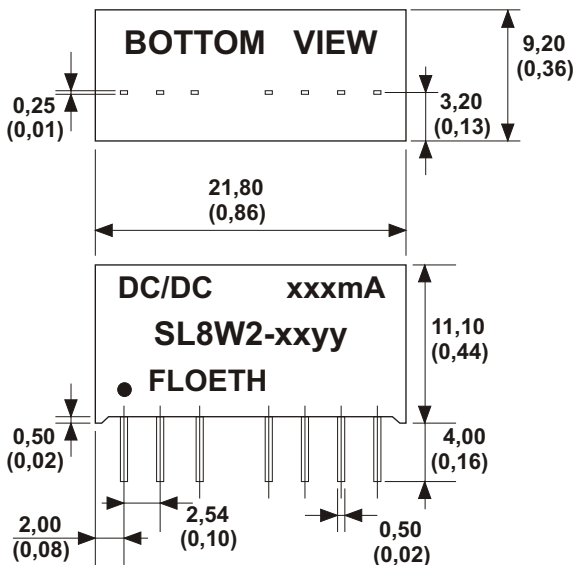
Input Voltage: wide 2:1  
Output Voltage Accuracy: typ.  $\pm 2\%$   
Line Regulation: max.  $\pm 0,5\%$   
Load Regulation (25% to 100% load): typ.  $\pm 0,5\%$   
Efficiency: up to 85%

Output Ripple & Noise @ 20MHz BW: max. 50mVp-p  
Short Circuit Protection: continuous  
Operating Temperature:  $-40^{\circ}\text{C}$  to  $+85^{\circ}\text{C}$   
Isolation Voltage: min. 1000V DC  
Part-No.: /H2 min. 2000V DC  
Part-No.: /H3 min. 3000V DC

**CAUTION: NO INPUT POLARITY CHANGE ALLOWED!**

		1 Watt		2 Watt				1 Watt		2 Watt	
SINGLE Part - No.	Input Voltage	Output Voltage	Output Current	Output Current		DUAL Part - No.	Input Voltage	Output Voltage	Output Current	Output Current	
SL8W2-0503,3 SL8W2-0505 SL8W2-0509 SL8W2-0512 SL8W2-0515	4,5 - 9V	3,3V 5,0V 9,0V 12,0V 15,0V	300mA 200mA 111mA 83mA 67mA	500mA 400mA 222mA 166mA 134mA		SL8W2-0503,3D SL8W2-0505D SL8W2-0509D SL8W2-0512D SL8W2-0515D	4,5 - 9V	$\pm 3,3\text{V}$ $\pm 5,0\text{V}$ $\pm 9,0\text{V}$ $\pm 12,0\text{V}$ $\pm 15,0\text{V}$	$\pm 150\text{mA}$ $\pm 100\text{mA}$ $\pm 56\text{mA}$ $\pm 42\text{mA}$ $\pm 34\text{mA}$	$\pm 250\text{mA}$ $\pm 200\text{mA}$ $\pm 111\text{mA}$ $\pm 83\text{mA}$ $\pm 67\text{mA}$	
SL8W2-1203,3 SL8W2-1205 SL8W2-1209 SL8W2-1212 SL8W2-1215	9 - 18V	3,3V 5,0V 9,0V 12,0V 15,0V	300mA 200mA 111mA 83mA 67mA	500mA 400mA 222mA 166mA 134mA		SL8W2-1203,3D SL8W2-1205D SL8W2-1209D SL8W2-1212D SL8W2-1215D	9 - 18V	$\pm 3,3\text{V}$ $\pm 5,0\text{V}$ $\pm 9,0\text{V}$ $\pm 12,0\text{V}$ $\pm 15,0\text{V}$	$\pm 150\text{mA}$ $\pm 100\text{mA}$ $\pm 56\text{mA}$ $\pm 42\text{mA}$ $\pm 34\text{mA}$	$\pm 250\text{mA}$ $\pm 200\text{mA}$ $\pm 111\text{mA}$ $\pm 83\text{mA}$ $\pm 67\text{mA}$	
SL8W2-2403,3 SL8W2-2405 SL8W2-2409 SL8W2-2412 SL8W2-2415	18 - 36V	3,3V 5,0V 9,0V 12,0V 15,0V	300mA 200mA 111mA 83mA 67mA	500mA 400mA 222mA 166mA 134mA		SL8W2-2403,3D SL8W2-2405D SL8W2-2409D SL8W2-2412D SL8W2-2415D	18 - 36V	$\pm 3,3\text{V}$ $\pm 5,0\text{V}$ $\pm 9,0\text{V}$ $\pm 12,0\text{V}$ $\pm 15,0\text{V}$	$\pm 150\text{mA}$ $\pm 100\text{mA}$ $\pm 56\text{mA}$ $\pm 42\text{mA}$ $\pm 34\text{mA}$	$\pm 250\text{mA}$ $\pm 200\text{mA}$ $\pm 111\text{mA}$ $\pm 83\text{mA}$ $\pm 67\text{mA}$	
SL8W2-4803,3 SL8W2-4805 SL8W2-4809 SL8W2-4812 SL8W2-4815	36 - 72V	3,3V 5,0V 9,0V 12,0V 15,0V	300mA 200mA 111mA 83mA 68mA	500mA 400mA 222mA 166mA 134mA		SL8W2-4803,3D SL8W2-4805D SL8W2-4809D SL8W2-4812D SL8W2-4815D	36 - 72V	$\pm 3,3\text{V}$ $\pm 5,0\text{V}$ $\pm 9,0\text{V}$ $\pm 12,0\text{V}$ $\pm 15,0\text{V}$	$\pm 150\text{mA}$ $\pm 100\text{mA}$ $\pm 56\text{mA}$ $\pm 42\text{mA}$ $\pm 34\text{mA}$	$\pm 250\text{mA}$ $\pm 200\text{mA}$ $\pm 111\text{mA}$ $\pm 83\text{mA}$ $\pm 67\text{mA}$	

**Any other output voltage available !**



ALL DIMENSIONS IN MM (INCHES)  
MILLIMETERS +/- 0,25mm  
(INCHES +/- 0,01")  
All pins on a 2,54mm pitch

PIN CONNECTION		
PIN	SINGLE	DUAL
1	- Vin	- Vin
2	+ Vin	+ Vin
3	NP Optional: CTRL	CTRL
5	NE	NE
6	+Vout	+Vout
7	- Vout	COM
8	CS Optional external capacitor	- Vout

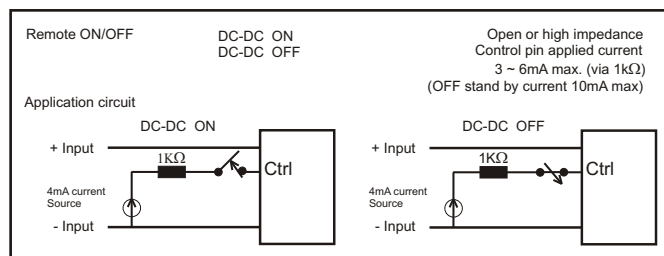
NC = No Connection  
NP = No Pin

**Pin 5 (NE)**

This pin is used internally and must have no external connection

**Pin 8 (Cs)**

This pin provides a connection point to the main reservoir capacitor. Additional capacitance can be added from this pin 7. Any low esr capacitor will improve ripple and noise in some measure. The benefit of this access point over simple additional output capacitance is that it precedes the output filter inductor. Maximum values of external capacitance will be dependent on the output voltage / loading of the converter and the desired ripple figure. Starting values can be in the range of 100µF



Specification may be changed without notice please contact office for verification

We can offer EMC - Filter according to EN55011/22 Class B.

Regulated  
Case Style: SIP 8

## COMMERCIAL-INDUSTRIAL DC/DC Converters

3 Watt  
Series: SL8W2

### Electrical specifications:

Input Voltage: wide 2:1  
Output Voltage Accuracy: typ.  $\pm 2\%$   
Line Regulation: max.  $\pm 0,5\%$   
Load Regulation (20% to 100% load): typ.  $\pm 0,5\%$   
Efficiency: up to 83%

Output Ripple & Noise @ 20MHz BW: max. 50mVp-p continuous  
Short Circuit Protection:  
Operating Temperature:  $-40^{\circ}\text{C}$  to  $+71^{\circ}\text{C}$   
Isolation Voltage: min. 1000V DC  
Part-Nr. /H2 min. 2000V DC  
Part-Nr. /H3 min. 3000V DC

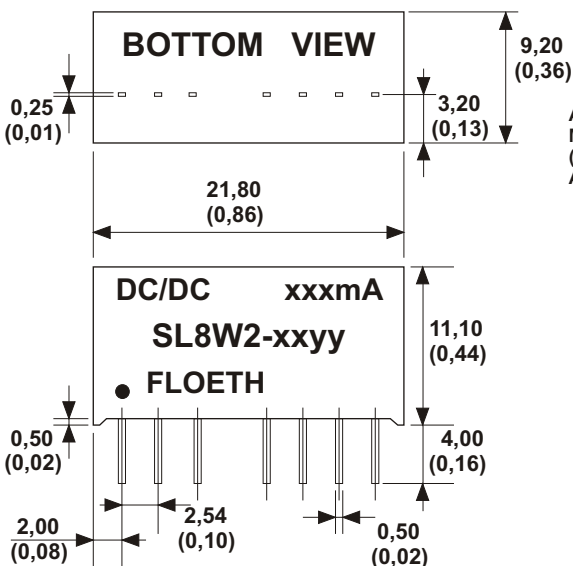
**CAUTION: NO INPUT POLARITY CHANGE ALLOWED!**

3 Watt					3 Watt				
SINGLE Part - No.	Input Voltage	Output Voltage	Output Current	max. Capacitive Load	DUAL Part - No.	Input Voltage	Output Voltage	Output Current	max. Capacitive Load
SL8W2-0503,3	4,5 - 9V	3,3V	600mA	1000 $\mu$ F	SL8W2-0503,3D	4,5 - 9V	$\pm 3,3\text{V}$	$\pm 300\text{mA}$	$\pm 470\mu\text{F}$
SL8W2-0505		5,0V	600mA	1000 $\mu$ F	SL8W2-0505D		$\pm 5,0\text{V}$	$\pm 300\text{mA}$	$\pm 470\mu\text{F}$
SL8W2-0509		9,0V	333mA	470 $\mu$ F	SL8W2-0509D		$\pm 9,0\text{V}$	$\pm 167\text{mA}$	$\pm 220\mu\text{F}$
SL8W2-0512		12,0V	250mA	220 $\mu$ F	SL8W2-0512D		$\pm 12,0\text{V}$	$\pm 125\text{mA}$	$\pm 100\mu\text{F}$
SL8W2-0515		15,0V	200mA	100 $\mu$ F	SL8W2-0515D		$\pm 15,0\text{V}$	$\pm 100\text{mA}$	$\pm 47\mu\text{F}$
SL8W2-1203,3	9 - 18V	3,3V	600mA	1000 $\mu$ F	SL8W2-1203,3D	9 - 18V	$\pm 3,3\text{V}$	$\pm 300\text{mA}$	$\pm 470\mu\text{F}$
SL8W2-1205		5,0V	600mA	1000 $\mu$ F	SL8W2-1205D		$\pm 5,0\text{V}$	$\pm 300\text{mA}$	$\pm 470\mu\text{F}$
SL8W2-1209		9,0V	333mA	470 $\mu$ F	SL8W2-1209D		$\pm 9,0\text{V}$	$\pm 167\text{mA}$	$\pm 220\mu\text{F}$
SL8W2-1212		12,0V	250mA	220 $\mu$ F	SL8W2-1212D		$\pm 12,0\text{V}$	$\pm 125\text{mA}$	$\pm 100\mu\text{F}$
SL8W2-1215		15,0V	200mA	100 $\mu$ F	SL8W2-1215D		$\pm 15,0\text{V}$	$\pm 100\text{mA}$	$\pm 47\mu\text{F}$
SL8W2-2403,3	18 - 36V	3,3V	600mA	1000 $\mu$ F	SL8W2-2403,3D	18 - 36V	$\pm 3,3\text{V}$	$\pm 300\text{mA}$	$\pm 470\mu\text{F}$
SL8W2-2405		5,0V	600mA	1000 $\mu$ F	SL8W2-2405D		$\pm 5,0\text{V}$	$\pm 300\text{mA}$	$\pm 470\mu\text{F}$
SL8W2-2409		9,0V	333mA	470 $\mu$ F	SL8W2-2409D		$\pm 9,0\text{V}$	$\pm 167\text{mA}$	$\pm 220\mu\text{F}$
SL8W2-2412		12,0V	250mA	220 $\mu$ F	SL8W2-2412D		$\pm 12,0\text{V}$	$\pm 125\text{mA}$	$\pm 100\mu\text{F}$
SL8W2-2415		15,0V	200mA	100 $\mu$ F	SL8W2-2415D		$\pm 15,0\text{V}$	$\pm 100\text{mA}$	$\pm 47\mu\text{F}$
SL8W2-4803,3	36 - 72V	3,3V	600mA	1000 $\mu$ F	SL8W2-4803,3D	36 - 72V	$\pm 3,3\text{V}$	$\pm 300\text{mA}$	$\pm 470\mu\text{F}$
SL8W2-4805		5,0V	600mA	1000 $\mu$ F	SL8W2-4805D		$\pm 5,0\text{V}$	$\pm 300\text{mA}$	$\pm 470\mu\text{F}$
SL8W2-4809		9,0V	333mA	470 $\mu$ F	SL8W2-4809D		$\pm 9,0\text{V}$	$\pm 167\text{mA}$	$\pm 220\mu\text{F}$
SL8W2-4812		12,0V	250mA	220 $\mu$ F	SL8W2-4812D		$\pm 12,0\text{V}$	$\pm 125\text{mA}$	$\pm 100\mu\text{F}$
SL8W2-4815		15,0V	200mA	100 $\mu$ F	SL8W2-4815D		$\pm 15,0\text{V}$	$\pm 100\text{mA}$	$\pm 47\mu\text{F}$

Input voltage range 3:1 also available!

Vin 9-27V (24) & Vin 20-60V(48)  
for example: SL8W3-2405 3W

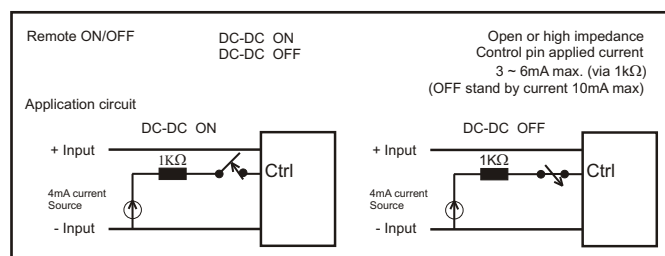
Any other output voltage available !



ALL DIMENSIONS IN MM (INCHES)  
MILLIMETERS +/- 0,25mm  
(INCHES +/- 0,01")  
All pins on a 2,54mm pitch

PIN CONNECTION		
PIN	SINGLE	DUAL
1	- Vin	- Vin
2	+ Vin	+ Vin
3	CTRL	CTRL
5	NC	NC
6	+Vout	+Vout
7	- Vout	COM
8	NC	- Vout

NC = No Connection  
NP = No Pin



Specification may be changed without notice  
please contact office for verification

We can offer EMC - Filter  
according to EN55011/22 Class B.