

Wide input range 1:2
Case Style: SIP 7

AUTOMOTIVE DC/DC Converters PWM - regulated

2 Watt
Series: S7W2

Electrical specifications:

Input voltage: wide 1:2
Output voltage accuracy: +/- 2%
Line regulation: +/- 0,2%
Load regulation: +/- 1%
Operating temperature: -55°C to +105°C
Ambient temperature: -55°C to +85°C

Efficiency: up to 80%
Output Ripple & Noise: typ. 150mVp-p
Short circuit protection: fully protected
Insulation test voltage: 1500V DC

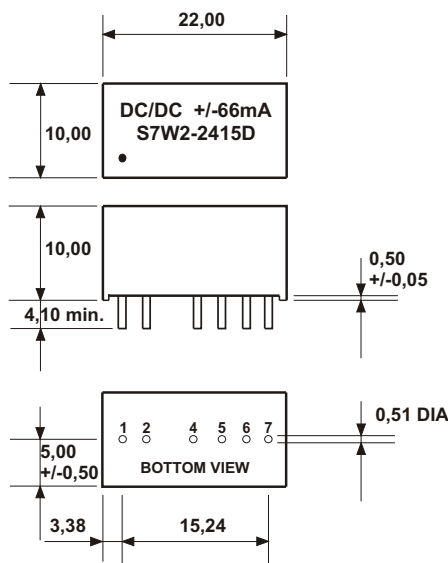
Optional:
Part-Nr. /H
Part-Nr. /J5

Alternate pin configuration
External -IN & -OUT/COM
connection allowed

CAUTION: NO INPUT POLARITY CHANGE ALLOWED!

Part - No. Single	Input Voltage	Output Voltage	Output current	Part - No. Dual	Input Voltage	Output Voltage	Output current
S7W2-1205	9 - 18V	5V	400mA	S7W2-1205D	9 - 18V	+/- 5V	+/-200mA
S7W2-1212		12V	166mA	S7W2-1212D		+/-12V	+/- 83mA
S7W2-1215		15V	133mA	S7W2-1215D		+/-15V	+/- 66mA
S7W2-1224		24V	83mA	S7W2-1224D		+/-24V	+/- 42mA
S7W2-2405	16 - 36V	5V	400mA	S7W2-2405D	16 - 36V	+/- 5V	+/-200mA
S7W2-2412		12V	166mA	S7W2-2412D		+/-12V	+/- 83mA
S7W2-2415		15V	133mA	S7W2-2415D		+/-15V	+/- 66mA
S7W2-2424		24V	83mA	S7W2-2424D		+/-24V	+/- 42mA
S7W2-4805	36 - 72V	5V	400mA	S7W2-4805D	36 - 72V	+/- 5V	+/-200mA
S7W2-4812		12V	166mA	S7W2-4812D		+/-12V	+/- 83mA
S7W2-4815		15V	133mA	S7W2-4815D		+/-15V	+/- 66mA
S7W2-4824		24V	83mA	S7W2-4824D		+/-24V	+/- 42mA

Any other output voltages available



PIN CONNECTION					
PIN	SINGLE	SINGLE A*	SINGLE /H*	DUAL	DUAL /H*
1	VCC	VCC	VCC	VCC	VCC
2	GND	GND	GND	GND	GND
3	NP	NP	NP	NP	NP
4	NC	-Vout	NP	-Vout	NP
5	-Vout	NP	-Vout	COM	-Vout
6	+Vout	+Vout	NP	+Vout	COM
7	NP	NP	+Vout	NP	+Vout

* For other pinning add "A" or "H" to the end of partnumber for example: S7W2-2405A, S7W2-2415D

ALL DIMENSIONS IN MM
MILLIMETERS +/- 0,25mm
All pins on a 2,54mm pitch
Note: NP = No pin; NC = No connection;
Dot denotes pin 1

Output capacitor is a must
Input capacitor 4,7µF - 10µF is a must

All specifications typical @ Ta +25°C
Nom. Vin & full load, unless otherwise specified!

Specification may be changed without notice
please contact office for verification

We can offer EMC - Filter
according to EN55011/22 Class B.

Wide input range 1:2
 Case Style: SIP 7

AUTOMOTIVE DC/DC Converters PWM - regulated

1 - 1,6 Watt
 Series: S7W2

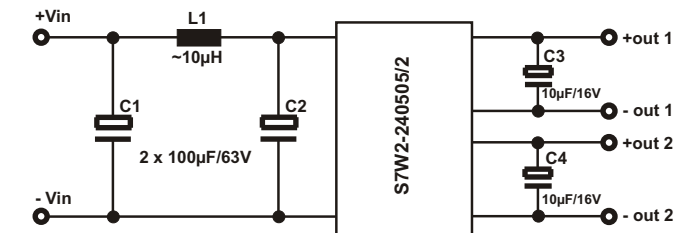
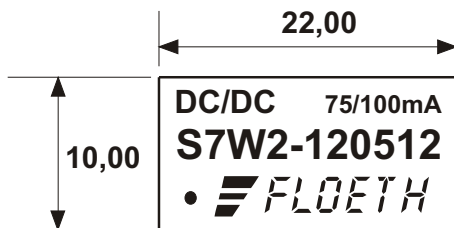
Electrical specifications:

Input voltage:	wide 1:2	Short circuit protection:	continuous
Output voltage accuracy:	+/- 2%	Operating temperature:	-55°C to +105°C
Line Vin/Vout:	+/- 0,2%	Ambient temperature:	-55°C to +85°C
Load regulation:	+/- 1% for regulated	Insulation test voltage:	1500V DC
Efficiency:	up to 80%	Optional:	
Output Ripple & Noise:	typ. 150mVp-p	Partr No./2:	separate Dual output I/O 1500V DC O/O 1000V DC

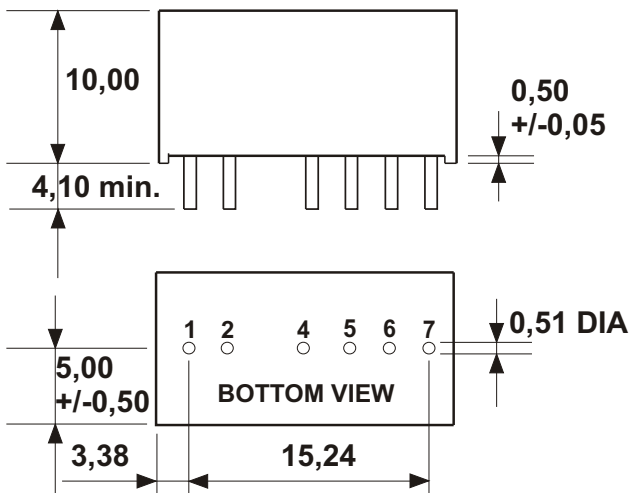
CAUTION NO INPUT POLARITY CHANGE ALLOWED!

Part - No. Dual	Input Voltage	Output 1 Voltage	Output 1 current	Output 2 Voltage	Output 2 current
** S7W2-120512	9 - 18V	5V regulated	75mA	12V unregulated	100mA
S7W2-240505	18 - 36V	5V regulated	200mA	5V unregulated	50mA

!! Any other output voltages available !!



S7W2-240505 output 1 ground load: 70mA is a must
 **Input capacitor 4,7µF - 10µF is a must
 Output capacitor 5V / 22µF/16V Tantal // 12V / 10µF/25V Tantal is a must



PIN CONNECTION		
PIN	DUAL	* DUAL /2
1	VCC	VCC
2	GND	GND
3	NP	NP
4	+12V	- OUT2
5	COM	+OUT2
6	+5V	- OUT1
7		+OUT1

* For other pinning:
 Add "/2" to the end of Partnumber
 For example S7W2-120512/2 1,6W

ALL DIMENSIONS IN MM
 MILLIMETERS +/- 0,25mm
 All pins on a 2,54mm pitch
 Note: NP = No pin; NC = No connection;
 Dot denotes pin 1

All specifications typical @ Ta +25°C
 Nom. Vin & full load, unless otherwise specified!

Specification may be changed without notice
 please contact office for verification

We can offer EMC - Filter
 according to EN55011/22 Class B.